

Kodi mileme ndi chiyani?

Phunziro 1

Zomwe tiphunzire sabata ino:

- momwe mungasankhire (kapena kugawa) zinyama
- zonse za matupi a mileme
- chifukwa chiyani mileme ili yosangalatsa kwambiri
- mileme ndi yakale bwanji!



Moni kumeneko!

Kodi mukundikumbukira? Spike, dolo kwambiri pamilime yonse yomwe ilipo! Ndine wokondwa kuyamba nanu phunziro lathu loyamba la pa intaneti !!

Kodi mileme ndi chiyani? Ndi funso lalifupi koma ndili ndi zambiri zoti ndikuuzeni ndeno likhoza kukhala yankho lalitali. Ndikuuzani zambiri za mileme mkati mwa masabata 8 otsatirawa. Koma pakali pano ndikufuna ndikuuzeni za komwe timakhala mu "mtundu wa banja" wa zinyama komanso pang'ono za momwe tidasinthira komanso liti.

Mukawona
chizindikiro ichi:



mufunika thandizo
kuchokera kwa
munthu wamkulu.

Musaiwale, chizindikiro cha pensulo chimatanthauza kuti ndi nthawi yanu yoti muchitepo kanthu!

Taphatikiza mawu onse atsopano pamndandanda kumapeto ngati chikumbutso!



Mudzafunika:



pensulo



Mtengo wa banja la zinyama



Ndikudziwa kuti anthu amakonda kusanja zinthu m'magulu. Nachi chitsanzo cha kusanja - tsatirani mizele ndikusankha gulu lomwe mileme ingakhalemo. Mutha kuyika chizindikiro mubokosi lomwe lili pafupi ndi yankho (Kapena jambulani kamleme kang'ono). Mukhozanso kuyankha funsoli malinga ndi momwe anthu amaonera, koma ngati mukuyankha mafunso a mileme ndi anthu muzigwiritsa ntchito chizindikiro chosiyana pa chilichonse (monga mawonekedwe a mleme pothandawuza mileme ndi nkhope yosekerera kwa anthu).

1 Ndinu chani?

Ndine chomera

Ndine nyama

Kwa inu!



2 Kodi muli ndi msana?

Inde - ndili ndi msana (zomwe zimakupanga kukhala vetebureti)!

Ayi - sindikumva mafupa amtundu uliwonse kumbuyo kwanga.
(ngati zili choncho fufuzaninso...)

3 Uli mwana unkamwa mkaka?

Inde - chakudya changa choyamba chinali mkaka. (zimenezo zimakupanga kukhala gulu yanyama zoyamwitsa)

Ayi - makolo anga adandidyetsa mphutsi ndi bongololo! (Zikatero mwina munali mwana wa mbalame!)

4 Kodi mutha kuwuluka pogwiritsa ntchito khungu pakati pa zala zanu ngati mapiko?

Inde, ndiwe mleme! Muli m'gulu la nyama zapadera zotchedwa

Ayi - sindingathe kuwuluka. Sindiwe mileme (mwina uthakhala munthu?!)
Sitingakhale tonse angwirowo ;o)

"Kayiropitera"



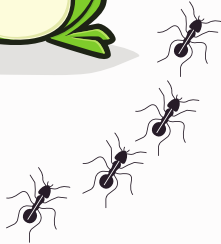
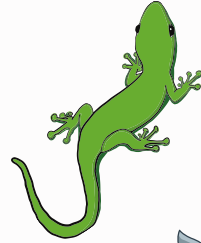
Kodi nyamayo ndi chiyani?

Kodi mumadziwa kuti inivetebureti ndi nyama yomwe ilibe msana? Pazithunzi zomwe zili m'munsimu, nyama zambiri zili ndi mafupa apa msana (mavetebureti). Kodi mukuwona nyama zomwe zilibe msana? Jambulani mzere wolumikiza nyama ndi mawu akuti inivetebureti. Ena onse ali m'gulu lalikulu (vetebureti), zomwe zimasanjidwa m'magulu ang'onoang'ono omwe ndi; nyama zoyamwitsa, zokwawa, mbalame, nsomba ndi afibiyani. Jambulani mzere wolumikiza nyamayo ku gulu lawo (amadziwanso ngati kalasi):

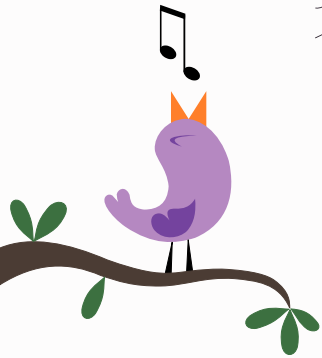
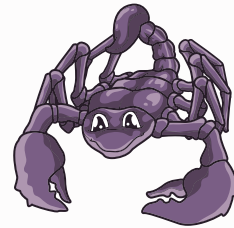
Kwa inu!



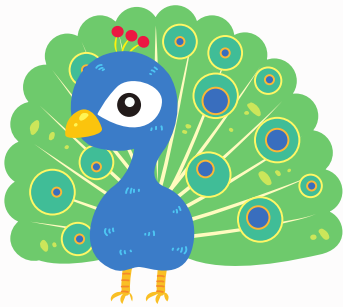
Inivetebureti



Zoyamwitsa



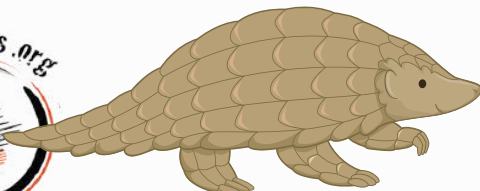
afibiyani



mbalame



zokwawa



Nchiyani chimapangitsa mileme kukhala zinyama zapadera?

Mileme ndi zinyama ZOKHA zomwe zimatha kuwuluka panyama zonse zoyamwitsa. Nyama zina zoyamwitsa zimatha kudumpha kuchokera mumtengo kupita ku mtengo n'kumauluka m'njira, koma mileme ndi nyama yokhayo yomwe imatha kuwuluka kwenikweni. Mileme ndi yapadera pazifukwa zina zambiri koma ichi ndi chapedera kwambiri (ife timanena kuti iyi ndi mphamvu yawo yapadera!).



Koma monga nyama zoyamwitsa palinso njira zambiri zomwe zimafanana ndi zinyama zina (monga anthu) - zimakhala ndi magari ofunda, mileme imabala ana (osati mazira!) ndipo amayi amapanga mkaka kuti adyetse mwanayo kuti azikhwima ndi mphamvu. Izi ndi zinthu zonse zomwe anthu amachitanso!

Kusinthika kwa mileme

KODI MUMADZIWA?

Mileme yoyambilila inayamba kupezeka zaka 100 miliyoni zapitazo. Anthu oyambilila anayamba kupezeka zaka 5-7 miliyoni zapitazo. Zathupi yamleme wakale zomwe zinakwiriridwa pansi zomwe zinapezekapo ndiza mleme wazaka pafupifupi 52 miliyoni ndipo zimasonyeza kuti mileme ikhatha kupanga ekolokeshoni ndikuwuluka

Zokwiriridwa pansizi zikuwonetsa mafupa a mileme omwe ali ofanana kwambiri ndi mileme yomwe ikuwuluka pano. Zikuwoneka kuti mileme ili ndi kapangidwe kawo kabwino kwambiri ndipo sanasinthe kwenikweni kuyambira pamene.

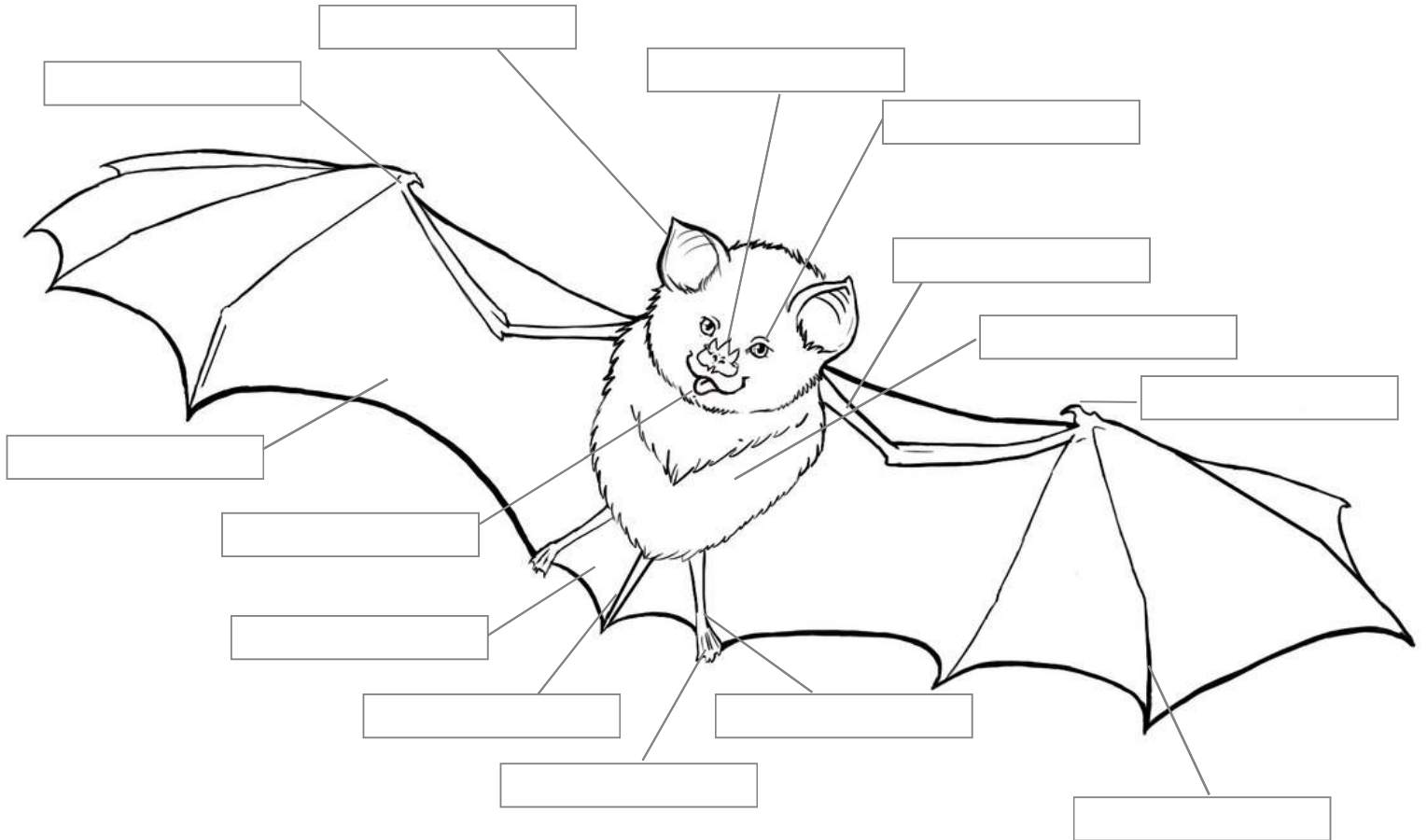


Matupi a mileme

Iwe ndi ine, sitikusiyana kwambiri. Ifenso tili ndi maso, makutu ndi lilime! Zachidziwikire, tili ndi kusiyana kumodzi kwakukulu: mapiko! Kodi mumadziwa, monga anthu, tili ndi zala zinayi ndi chala chachikulu, koma zala zathu ndi zazitali kwambiri ndipo zimalumikizana ndi nembanemba yamapiko. Ndi choncho: mileme imawuluka ndi manja awo! Monga nyama zambiri zoyamwitsa, tili ndi mchira ndi ubweya, ndipo mitundu yambiri ya mileme imakhala ndi mphuno yowoneka modwabwitsa- yotchedwa mphuno lachi tsamba.

Kwa inu!

Zeke yomwe ali apa ndi mileme wokongola uja wokhala ndi timasamba titatu pamphuno yake. Kodi mungadule zilembo zili m'munsizi ndi kufananiza zolembedwa ndi ziwalo za thupi (kapena kuzilemba)?



khutu

diso

nembanemba ya mchira

dzanja

bondo

ubweya

phazi

chala chachikulu

mkono

mchira

mphuno-
lachitsamba

lilime

chala

nembanemba ya
phiko



Nazi MFUNDO
ZOSANGALATSA ZOKHUDZA
mileme!!
mileme!!



Mleme ndi zinyama ZOKHA zoyamwitsa zomwe zimatha kuwuluka. Palinso nyama zina zoyamwitsa zomwe zimatha kuwuluka koma ife mileme ndife nyama zoyamwitsa zomwe zimatha kuwuluka bwino.



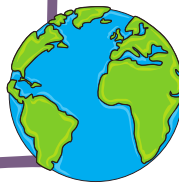
Mileme ili bwino kwambiri pakusinthana kugunda kwa mtima wawo. Tikhoza kuthamangitsa mlingo wakugunda kwa mtima pamene tikufuna mphamvu zambiri kuti tiwuluke ndipo tikhoza kuchedwetsa pamene tikufuna kusunga mphamvu. Kugunda kwa mtima waumunthu kumasinthana pang'ono koma osati momwe ulili wamilemefe.



Titha kuwona ndi maso NDIPO ambiri aife timawonanso ndi mawu (pogwiritsa ntchito ekolokeshoni) - Ndimakonda kufotokoza izi zili ngati zithunzi zopangidwa ndi mawu.



Mileme imapezeka pafupifupi kulikonse padziko lapansi. Kodi mumadziwa kuti mileme imapezeka kumpoto kwa Scandinavia? Kumeneko ndi kozizira kwambiri kwa ife mileme ya ku Africa! Timapezekanso mzipululu!! Malo okhawa omwe simudzatiyeza ndi Arctic, Antarctic ndi zilumba zingapo zakutali za m'nyanja zikuluzikulu.

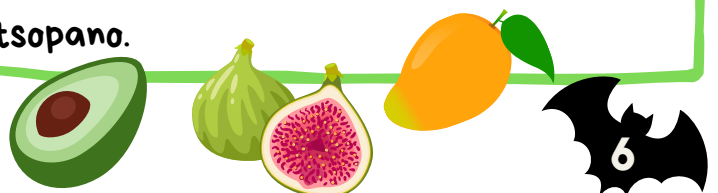


Mileme inasinthaka zaka 100 miliyoni zapitazo. Mileme inali kuwuluka kalekale anthu asanasinthike.



Pali mitundu (mitundu) yopitilira 1,400 ya mileme padziko lapansi. Pa zamoyo zonse zoyamwitsa padziko lonse lapansi gawo limodzi mwa magawo anayi a mitundu yonse ndi mtundu wa mileme.

Mileme ndi yofunika kwambiri, ena mwa ife timadya tizilombo tambirimbi, ena timaponya mungu mu maluwa ndipo ena amathandizira kufalitsa mbewu zomwe zimathandiza kuti mbewu zikule m'malo atsopano.



Kafotokozedwe ka mawu (mawu omwe taphunzira lero!)

"Mwina mwawerengapo mawu ena atsopano m'phunziroli, kuti akuthandizeni kukumbukira mawuwo ndi tanthauzo lake, ndakupangirani GOLOSALE. Golosale ndi mndandanda wa mawu, okonzedwa motsatira zilembo komanso kufotokoza mwachidule zomwe akutanthauza.

Kayiropitera- "phiko lamanja"

Dzina la sayansi la mileme! Mileme ili m'gulu lachilengedwe la Kayiropitera, mapiko awo ndi ofanana ndi manja athu (kungokhala ndi zala zazitali komanso khungu lopyapala pakati pa chala chilichonse ndi chala chaching'ono kufikira mabondo awo).

Inivetebureti - nyama yopanda msana.

Nsomba za jelli ndi tizilombo ndi zopanda msana, chifukwa zilibe msana (msana).

Nyama yoyamwitsa (mamo) - nyama yotentha yamagazi, yokhala ndi ubweya, yomwe imabereka ana omwe amadyetsedwa mkaka.

Mileme ya ana ndi ana anthu amakhala ndi mkaka monga chakudya chawo choyamba. Onsewo ndi nyama zoyamwitsa.

Vetebureti - nyama yokhala ndi msana.

Mileme ndi anthu onse awiri ali ndi msana.



Ndikukhulupirira kuti mwaphunzira zambiri
lero!

Tikuwonani sabata yamawa, kuti mudziwe
zambiri zamitundu yodabwitsa ya mileme!

Pamodzi, tiwona momwe mileme yonse
imasiyanirana kwambiri!

Musaiwale; Mayankho azochitikazi apezeka
patsamba la Bats without Borders ndipo
tiyikanso chikumbutso patsamba lathu la
Facebook!